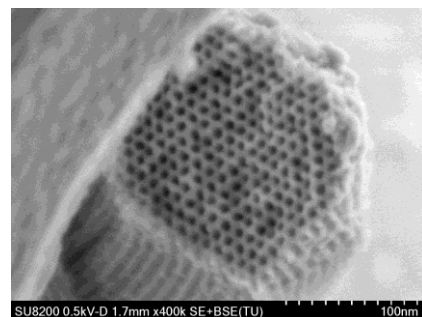


超高分解能電界放出形走査型電子顕微鏡

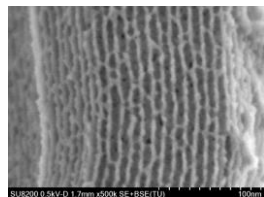
Regulus8230

HITACHI
Inspire the Next

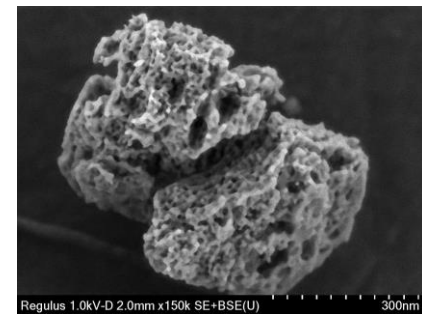
主な仕様	Regulus 8230
倍率	20 ~ 2,000,000倍
分解能@1kV	0.7nm
分解能@15kV	0.6nm
加速電圧	0.5 ~ 30kV
照射電圧 (リターディング適用時)	0.01 ~ 20kV
ステージ可動範囲	X:0 ~ 110mm Y:0 ~ 110mm



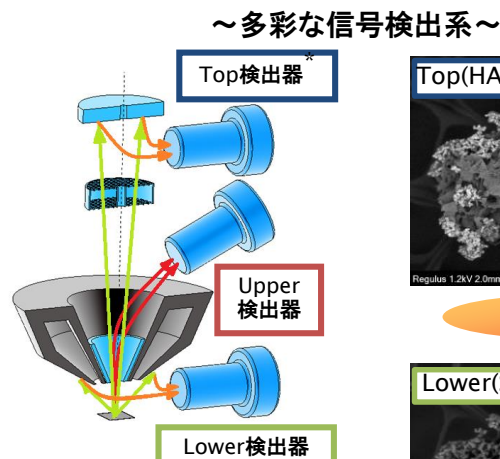
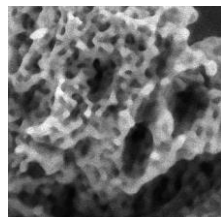
試料: メソポラスシリカ



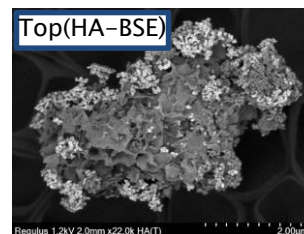
照射電圧: 500 V



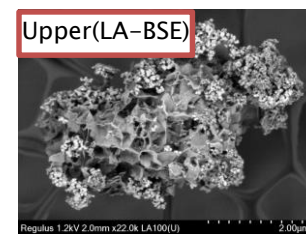
試料: 触媒 (Au/Al₂O₃)



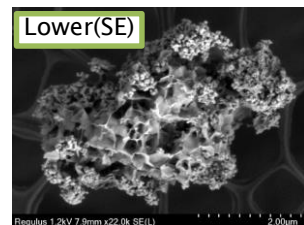
試料: 触媒 (FeNi-ZrO₂)
加速電圧: 1.2kV
倍率: x22k



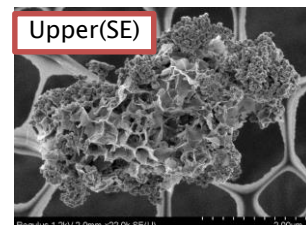
組成情報



組成+凹凸情報



凹凸情報



最表面情報